



MINERVA LABS

MiniFlu Pathogen Panel

**Focused and Reliable Diagnostics
for Influenza and RSV**



CAP
ACCREDITED
COLLEGE of AMERICAN PATHOLOGISTS



Minerva Labs

Address: 1203 S White Chapel Blvd Ste 150 Southlake, Texas 76092

Phone: +1 965-279-2091 • **Email:** info@minervalabs.health

CLIA ID: 45D2290237 • **Lab Director:** Dr. Adel Shaker

Introduction to MiniFlu Testing



Seasonal influenza and **respiratory syncytial virus (RSV)** infections are major causes of respiratory illness, leading to significant morbidity and mortality. Prompt and accurate diagnosis is critical for effective patient care and infection control during flu season.

Key Challenges in Traditional Testing:



Delayed results due to culture-based methods (48–72 hours).



Limited pathogen detection scope.



Difficulty differentiating co-infections.

Minerva Labs' Role



Our panel identifies the most common influenza strains and RSV subtypes using advanced PCR technology, enabling rapid and precise results for timely intervention.

Symptoms and High-Risk Groups

Common Symptoms:



Fever and chills.



Cough, sore throat, and runny nose.



Body aches and fatigue.



Shortness of breath or wheezing.

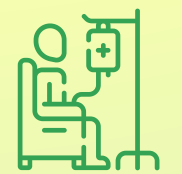
High-Risk Groups:



Children under 5, particularly those under 2.



Adults over 65 year, especially with chronic conditions.



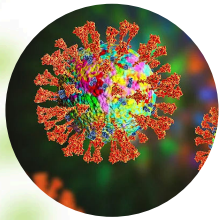
Immunocompromised individuals such as cancer or transplant patients.



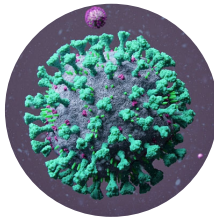
Pregnant women.

Pathogens Detected in the MiniFlu Panel

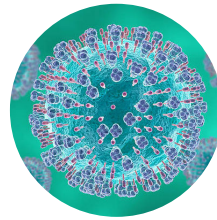
Viruses Identified:



Influenza A:
Including H1N1
and H3N2
subtypes.



Influenza B:
Seasonal
strains.



**Respiratory Syncytial
Virus (RSV):**
Subtypes A and B.



Key Features:



Detects co-infections
and differentiates
between flu and RSV.



Identifies influenza
subtypes critical for
antiviral therapy.

Testing Procedure & Transport Guidelines

Sample Collection Guidelines:



Step 1

Use a **nasopharyngeal swab** to collect a sample.



Step 2

Insert the swab into viral transport media to **preserve sample integrity**.



Step 3

Label the container with the **patient's name, DOB, and collection date**.



Specimen Transport:



Step 4

Store the sample at **2–8°C** if not immediately transported.



Step 5

Ship to Minerva Labs within **24 hours** using a biohazard-labeled container.



Turnaround Time:

Results delivered within **12–24 hours** to support timely clinical decisions.

Benefits of the MiniFlu Panel



Why Choose Minerva Labs for Miniflu Diagnostics?



Timely Diagnosis:

Ensures prompt antiviral therapy or hospitalization when needed.



Differentiation:

Distinguishes between influenza and RSV to avoid misdiagnosis.



Supports Public Health:

Enables accurate surveillance and outbreak management.



Minimizes Antibiotic Use:

Reduces unnecessary prescriptions by confirming viral infections.

Antibiotic Stewardship Program



Our Commitment

Minerva Labs promotes responsible use of medications by providing clinicians with actionable insights.

Program Key Features



Identifies pathogens
and avoids
unnecessary
antibiotic use.



Guides clinicians
with evidence-based
treatment
recommendations.



Reduces resistance
risks and improves
patient recovery
outcomes.

Benefits



Improved patient
recovery rates.



Reduced recurrence and
resistance development.



 **CAP**
ACCREDITED ✓
COLLEGE of AMERICAN PATHOLOGISTS



Clinical
Laboratory
Improvements
Amendments



MINERVA LABS

Why Minerva Labs?

- ✓ **CAP-certified, CLIA-accredited and COLA accredited** laboratory.
- ✓ **Unmatched accuracy** and rapid results.
- ✓ **Comprehensive reports** tailored to clinicians' needs.

Contact Information:

Minerva Labs

Address : 1203 S White Chapel Blvd Suite 150
Southlake, Texas 76092

Phone : +1 965-279-2091

Email : info@minervalabs.health