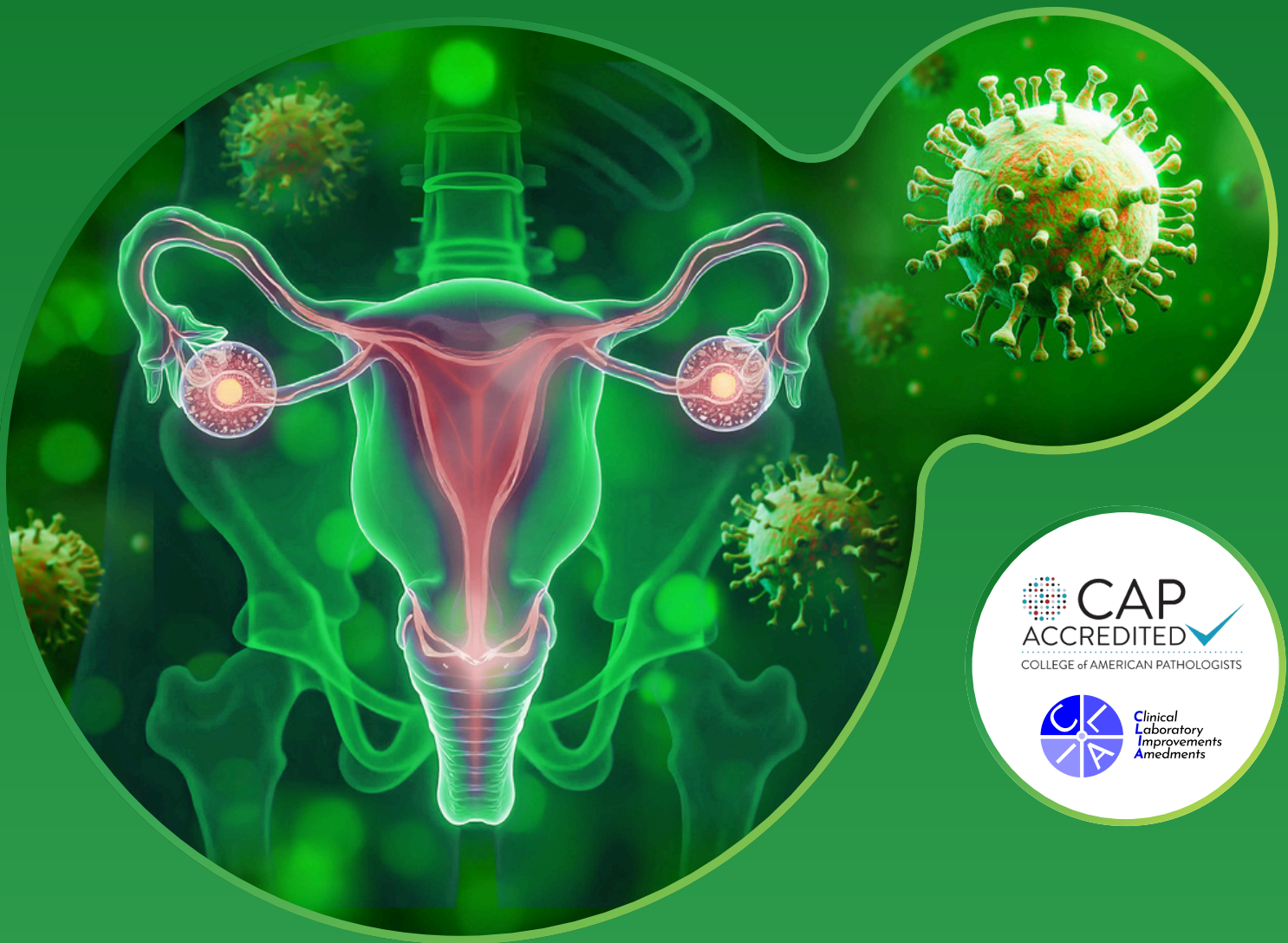




**MINERVA LABS**

# Sexually Transmitted Infection (STI) Testing

Accurate, Rapid, and Comprehensive  
STI Diagnostics for Better Patient Care



**CAP**  
ACCREDITED ✓  
COLLEGE of AMERICAN PATHOLOGISTS



Clinical  
Laboratory  
Improvements  
Amendments

## Minerva Labs

**Address:** 1203 S White Chapel Blvd Ste 150 Southlake, Texas 76092

**Phone:** +1 965-279-2091 • **Email:** [info@minervalabs.health](mailto:info@minervalabs.health)

**CLIA ID:** 45D2290237 • **Lab Director:** Dr. Adel Shaker

# Introduction to STI

## (Sexually Transmitted Infection)



Sexually Transmitted Infections (STIs) represent a significant global health challenge, with millions of new cases every year. Early detection and treatment are vital to controlling their spread and improving patient outcomes.

### Key Facts:



More than **1 million** STIs are acquired daily worldwide.



Over **70% of women** and **50% of men** with chlamydia are asymptomatic.



STIs often **increase the risk** of other infections, including HIV.

### Minerva Labs' Role



Sexually Transmitted Infections (STIs) represent a significant global health challenge, with millions of new cases every year. Early detection and treatment are vital to controlling their spread and improving patient outcomes.



# Objectives of STI Testing



**Early Detection:** Identify asymptomatic infections to prevent complications and transmission.



**Treatment Monitoring:** Ensure therapeutic efficacy and guide adjustments if needed.



**Precision Diagnosis:** Differentiate between STIs with overlapping symptoms for effective treatment.



**Epidemiological Insights:** Support public health initiatives by gathering data on STI prevalence.



## For Physicians:

- **Build Trust:** Offer comprehensive care to patients.
- **Control and Eradicate:** Reduce transmission rates through early intervention.
- **Personalized Treatment:** Ensure accurate medication protocols, minimizing resistance risks.

# Common STIs, Pathogens, and Symptoms



## 1. Chlamydia (*Chlamydia trachomatis*)



Urethral discharge, burning sensation, testicular pain.



Abnormal vaginal discharge, pain during urination, pelvic pain.



## 2. Gonorrhea (*Neisseria gonorrhoeae*)



Yellowish urethral discharge, painful urination.



Vaginal discharge, fever, pain during intercourse.



## 3. Herpes (*HSV-1 and HSV-2*)



Painful genital blisters, flu-like symptoms.



## 4. Trichomoniasis (*Trichomonas vaginalis*)



Irritation, mild discharge.



Itching, burning, and discomfort during intercourse.



## 5. Ureaplasma and Mycoplasma:



Can cause urethritis, pelvic inflammatory disease, and infertility in severe cases.

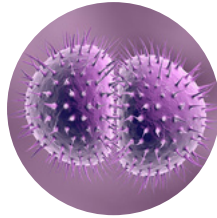


# Minerva Labs' STI Pathogen Panel

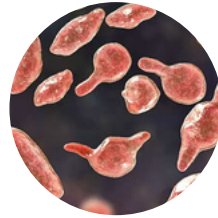
## Bacteria



**Chlamydia trachomatis**



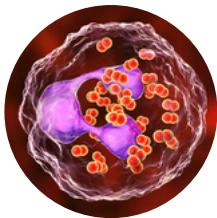
**Neisseria gonorrhoeae**



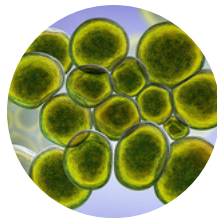
**Mycoplasma genitalium**



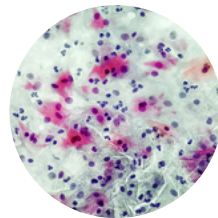
**Mycoplasma hominis**



**Ureaplasma parvum**

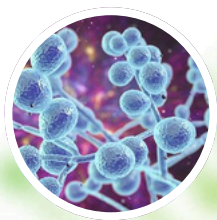


**Ureaplasma urealyticum**

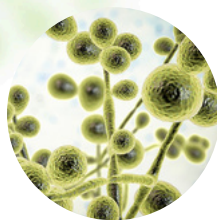


**Gardnerella vaginalis**

## Fungi



**Candida albicans**

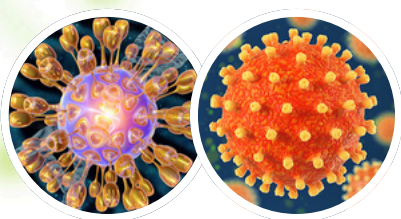


**Candida glabrata**



**Candida tropicalis**

## Viruses



**Herpes Simplex Virus (HSV-1, HSV-2)**

## Resistance Genes Detected

- Methicillin/Oxacillin (MRSA).
- Beta-Lactamases (ESBLs, KPC).
- Fluoroquinolones MUT and WT.



# Sample Collection and Handling Guidelines

## Sample Collection Instructions



### Step 1

Do not urinate for at least **1 hour** before providing a sample.



### Step 2

Clean the genital area with a clean tissue or cloth.



### Step 3

Collect **20–50 ml** of midstream urine in a sterile container.



### Step 4

Label the container with the patient's name, DOB, & collection date.



## Specimen Handling and Transport:

- Store at **2–8°C** if not processed immediately.
- Ship specimens in biohazard-labeled containers within **24 hours**.

## Benefits of Minerva Labs' STI Testing



**Rapid Turnaround:**  
Results within **24–48 hours**.



**Improved Outcomes:**  
Guides clinicians in delivering targeted therapy.



**Comprehensive Reports:**  
Includes resistance profiles and treatment recommendations.



**Accreditation:**  
CAP-certified and CLIA-accredited for the highest quality standards.

# Antibiotic Stewardship Program



## Our Commitment:

Minerva Labs promotes responsible antibiotic use through advanced diagnostics and evidence-based recommendations.

## Key Facts:



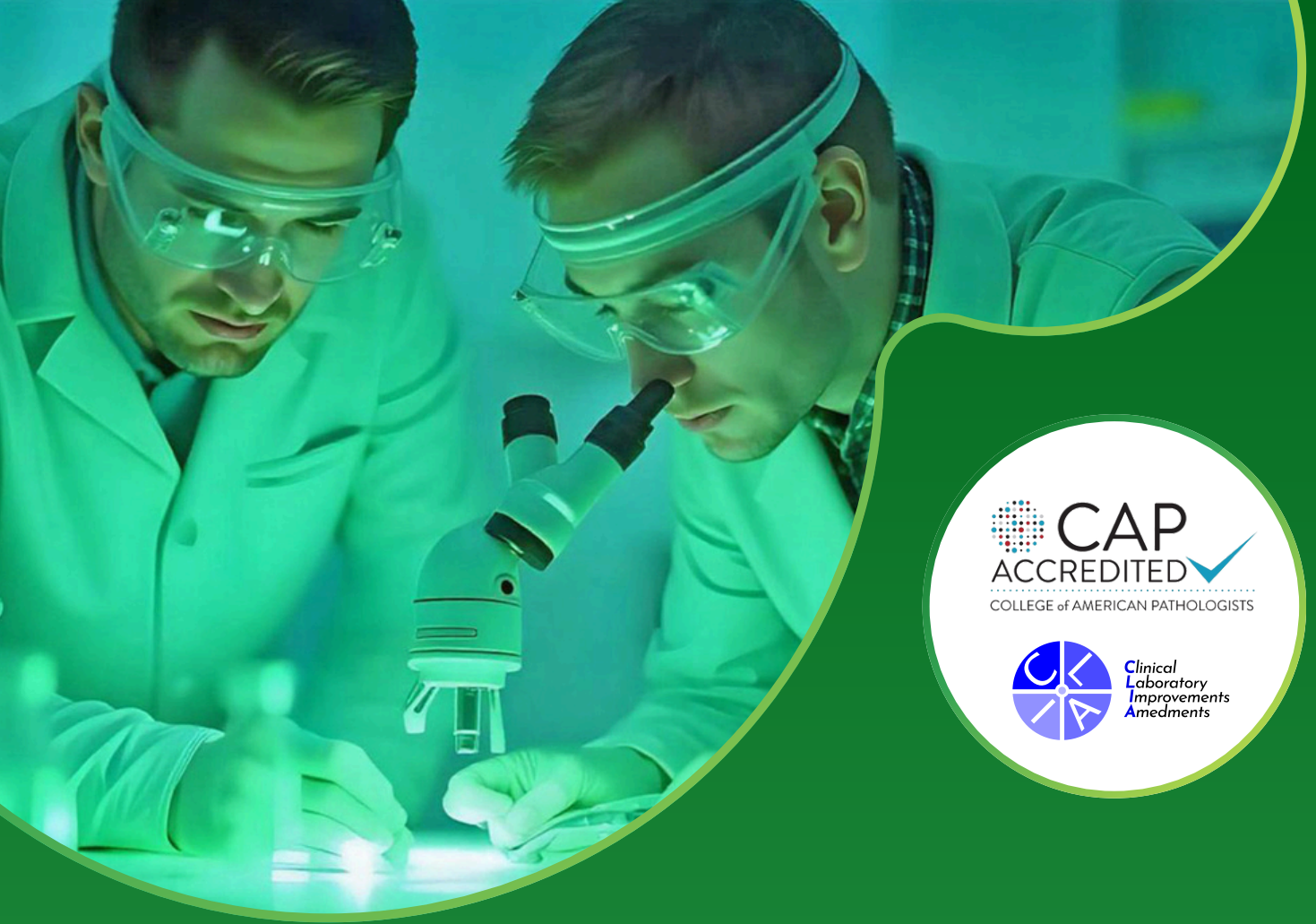
Detects resistance markers to minimize misuse.



Provides tailored treatment protocols for better patient outcomes.



Supports public health efforts to combat antibiotic resistance.



 **CAP**  
ACCREDITED ✓  
COLLEGE of AMERICAN PATHOLOGISTS



**MINERVA LABS**

## Why Minerva Labs?

- ✓ **CAP-certified, CLIA-accredited and COLA accredited** laboratory.
- ✓ **Unmatched accuracy** and rapid results.
- ✓ **Comprehensive reports** tailored to clinicians' needs.

## Contact Information:

### Minerva Labs

**Address** : 1203 S White Chapel Blvd Ste 150  
Southlake, Texas 76092

**Phone** : +1 965-279-2091

**Email** : [info@minervalabs.health](mailto:info@minervalabs.health)