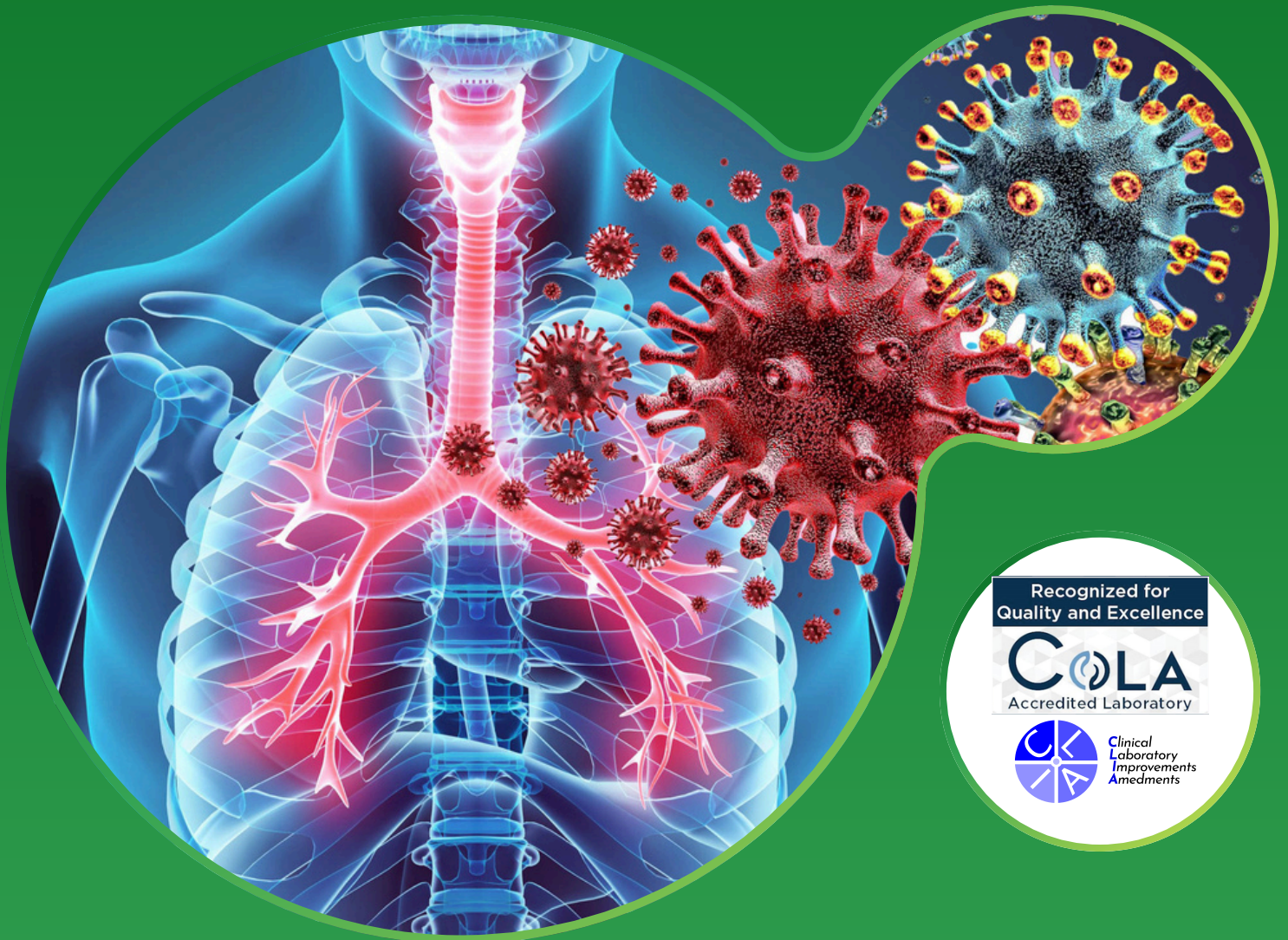




**MINERVA LABS**

# Respiratory Pathogen Panel (RPP)

**Rapid, Accurate, and Comprehensive  
Respiratory Pathogen Diagnostics**



Recognized for  
Quality and Excellence

**COLA**  
Accredited Laboratory



Clinical  
Laboratory  
Improvements  
Amendments

## **Minerva Labs**

**Address:** 1203 S White Chapel Blvd Ste 150 Southlake, Texas 76092

**Phone:** +1 965-279-2091 • **Email:** [info@minervalabs.health](mailto:info@minervalabs.health)

**CLIA ID:** 45D2314244 • **Lab Director:** Dr. Shaiju Vareed, PhD

# Introduction to Respiratory Pathogen Testing



**Respiratory tract infections (RTIs)** are a leading cause of morbidity worldwide, often presenting with overlapping symptoms. Accurate and timely diagnosis is crucial for effective treatment, especially in high-risk populations.

## Key Challenges in Traditional Testing:



**Delayed results** due to culture-based methods (48–72 hours).



**Limited pathogen** detection scope.



**Difficulty differentiating** co-infections.

## Minerva Labs' Role



Our **Respiratory Pathogen Panel** leverages PCR technology to provide comprehensive, rapid, and actionable insights, empowering healthcare providers to deliver optimal patient care.

# Symptoms and High-Risk Groups

## Symptoms of Respiratory Infections:



**Coughing and sneezing**



**Stuffy or runny nose.**



**Sore throat and headache.**



**Weakness, fatigue, and muscle aches.**



**Fever, chills, and wheezing.**

## High-Risk Groups:



**Children under 5, especially infants.**



**Adults over 65 years.**



**Immunocompromised individuals** (e.g., cancer patients, transplant recipients).



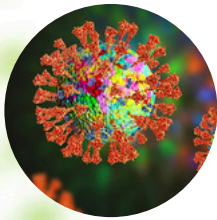
**Pregnant women.**



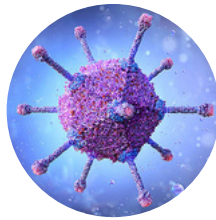


# Pathogens Detected in Minerva Labs' RPP

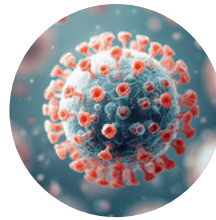
## Viral Pathogens:



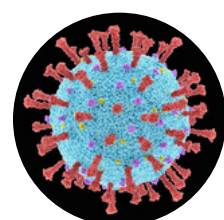
**Influenza A,  
Influenza B.**



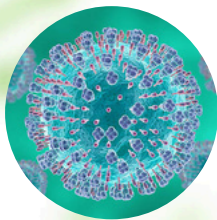
**Adenovirus**



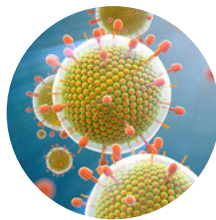
**Enterovirus**



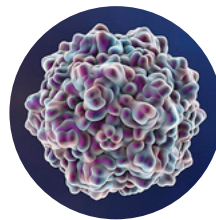
**Rhinovirus.**



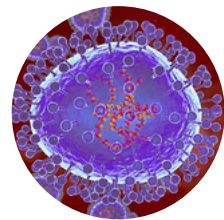
**Respiratory  
Syncytial Virus  
(RSV) A/B.**



**Parainfluenza  
Viruses 1-4.**



**Bocavirus**

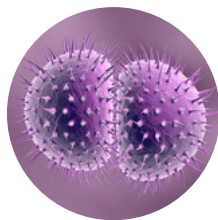


**Human  
Metapneumovirus  
(HMPV)**

## Bacterial Pathogens:



**Streptococcus  
pneumoniae**



**Haemophilus  
influenzae**



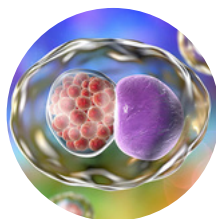
**Bordetella  
pertussis**



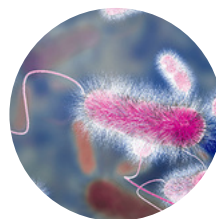
**Bordetella  
parapertussis**



**Mycoplasma  
pneumoniae**



**Chlamydia  
pneumoniae**



**Legionella  
pneumophila**

# Benefits of Minerva Labs' RPP



## Why Choose Minerva Labs for RPP Diagnostics?



### **Rapid Turnaround:**

Ensures timely clinical decisions.



### **High Accuracy:**

Advanced molecular technology minimizes false positives/negatives.



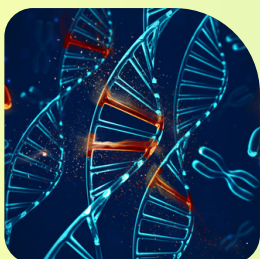
### **Comprehensive**

**Detection:** Covers a wide range of respiratory pathogens.



### **Actionable Insights:**

Includes resistance profiles and treatment recommendations.



## Resistance Genes Detected

- Beta-Lactamases (ESBLs, KPC).
- Methicillin/Oxacillin resistance (MRSA).
- Fluoroquinolones (MUT and WT).



# Testing Process and Turnaround Time

## Sample Collection Instructions



### Step 1

Collect a nasopharyngeal swab using a sterile collection kit.



### Step 2

Label the specimen with the patient's name, DOB, and collection date.



### Step 3

Transport samples in viral transport media at 2–8°C.



## Turnaround Time:

- Results available within **24–48 hours** after we receive your sample.

## Advantages of Minerva Labs' Testing:



Rapid, multiplexed **PCR-based pathogen** detection.



**Comprehensive panels** covering both viral and bacterial pathogens.



Tailored reports with resistance markers and **treatment guidance**.



# Antibiotic Stewardship Program



## Our Commitment

Minerva Labs promotes responsible antibiotic use to combat resistance and improve patient outcomes.

## Program Key Features



**Detects resistance**  
markers for  
personalized therapy.



Reduces  
**inappropriate**  
**antibiotic** use.



**Supports clinicians**  
with evidence-based  
recommendations.

## Benefits



**Improved** patient  
recovery rates.



**Reduced** recurrence and  
resistance development.



Recognized for  
Quality and Excellence

**COLA**  
Accredited Laboratory



**MINERVA LABS**

## Why Minerva Labs?

- ✓ **CLIA** and **COLA**-accredited laboratory.
- ✓ **Unmatched accuracy** and rapid results.
- ✓ **Comprehensive reports** tailored to clinicians' needs.

## Contact Information:

### Minerva Labs

**Address** : 1203 S White Chapel Blvd Ste 150  
Southlake, Texas 76092

**Phone** : +1 965-279-2091

**Email** : [info@minervalabs.health](mailto:info@minervalabs.health)