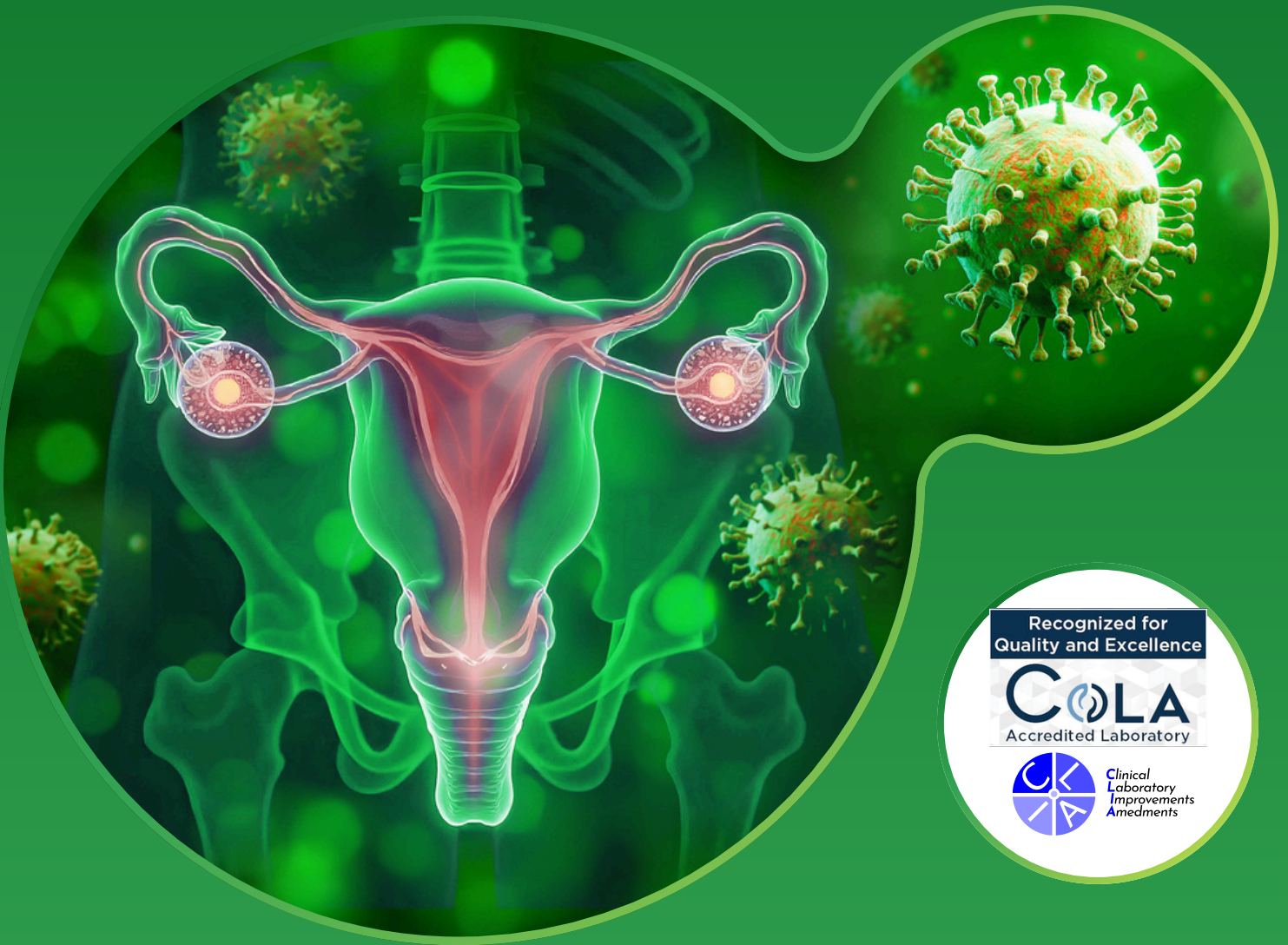




MINERVA LABS

Sexually Transmitted Infection (STI) Testing

Accurate, Rapid, and Comprehensive
STI Diagnostics for Better Patient Care



Recognized for
Quality and Excellence
COLA
Accredited Laboratory



Clinical
Laboratory
Improvements
Amendments

Minerva Labs

Address: 1203 S White Chapel Blvd Ste 150 Southlake, Texas 76092

Phone: +1 965-279-2091 • **Email:** info@minervalabs.health

CLIA ID: 45D2314244 • **Lab Director:** Dr. Shaiju Vareed, PhD

Introduction to STI

(Sexually Transmitted Infection)



Sexually Transmitted Infections (STIs) represent a significant global health challenge, with millions of new cases every year. Early detection and treatment are vital to controlling their spread and improving patient outcomes.

Key Facts:



More than **1 million** STIs are acquired daily worldwide.



Over **70% of women** and **50% of men** with chlamydia are asymptomatic.



STIs often **increase the risk** of other infections, including HIV.

Minerva Labs' Role



Sexually Transmitted Infections (STIs) represent a significant global health challenge, with millions of new cases every year. Early detection and treatment are vital to controlling their spread and improving patient outcomes.

Objectives of STI Testing



Early Detection: Identify asymptomatic infections to prevent complications and transmission.



Treatment Monitoring: Ensure therapeutic efficacy and guide adjustments if needed.



Precision Diagnosis: Differentiate between STIs with overlapping symptoms for effective treatment.



Epidemiological Insights: Support public health initiatives by gathering data on STI prevalence.



For Physicians:

- **Build Trust:** Offer comprehensive care to patients.
- **Control and Eradicate:** Reduce transmission rates through early intervention.
- **Personalized Treatment:** Ensure accurate medication protocols, minimizing resistance risks.

Common STIs, Pathogens, and Symptoms



1. Chlamydia (*Chlamydia trachomatis*)



Urethral discharge, burning sensation, testicular pain.



Abnormal vaginal discharge, pain during urination, pelvic pain.



2. Gonorrhea (*Neisseria gonorrhoeae*)



Yellowish urethral discharge, painful urination.



Vaginal discharge, fever, pain during intercourse.



3. Herpes (*HSV-1 and HSV-2*)



Painful genital blisters, flu-like symptoms.



4. Trichomoniasis (*Trichomonas vaginalis*)



Irritation, mild discharge.



Itching, burning, and discomfort during intercourse.



5. Ureaplasma and Mycoplasma:

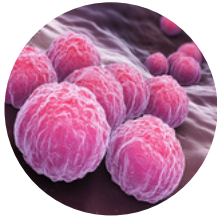


Can cause urethritis, pelvic inflammatory disease, and infertility in severe cases.

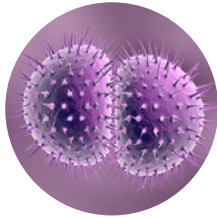


Minerva Labs' STI Pathogen Panel

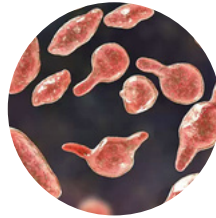
Bacteria



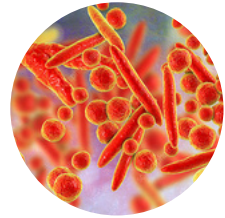
Chlamydia trachomatis



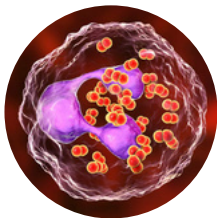
Neisseria gonorrhoeae



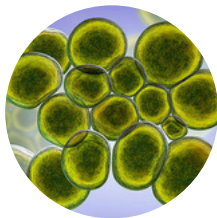
Mycoplasma genitalium



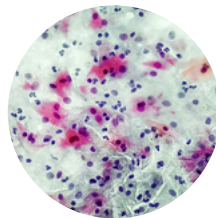
Mycoplasma hominis



Ureaplasma parvum

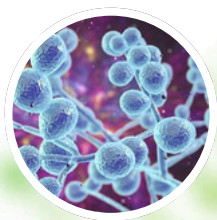


Ureaplasma urealyticum

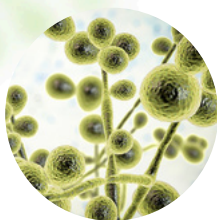


Gardnerella vaginalis

Fungi



Candida albicans

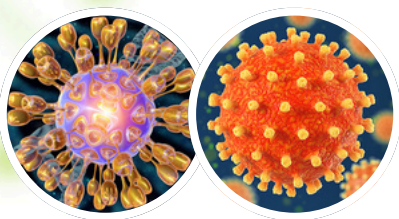


Candida glabrata



Candida tropicalis

Viruses



Herpes Simplex Virus (HSV-1, HSV-2)

Resistance Genes Detected

- Methicillin/Oxacillin (MRSA).
- Beta-Lactamases (ESBLs, KPC).
- Fluoroquinolones MUT and WT.

Sample Collection and Handling Guidelines

Sample Collection Instructions



Step 1

Do not urinate for at least **1 hour** before providing a sample.



Step 2

Clean the genital area with a clean tissue or cloth.



Step 3

Collect **20–50 ml** of midstream urine in a sterile container.



Step 4

Label the container with the patient's name, DOB, & collection date.



Specimen Handling and Transport:

- Store at **2–8°C** if not processed immediately.
- Ship specimens in biohazard-labeled containers within **24 hours**.

Benefits of Minerva Labs' STI Testing



Rapid Turnaround:

Results within **24–48 hours** after we receive your sample.



Improved Outcomes:

Guides clinicians in delivering targeted therapy.



Comprehensive Reports:

Includes resistance profiles and treatment recommendations.



Accreditation:

COLA-certified and CLIA-accredited for the highest quality standards.

Antibiotic Stewardship Program



Our Commitment:

Minerva Labs promotes responsible antibiotic use through advanced diagnostics and evidence-based recommendations.

Key Facts:



Detects resistance markers to minimize misuse.



Provides tailored treatment protocols for better patient outcomes.



Supports public health efforts to combat antibiotic resistance.



Recognized for
Quality and Excellence

COLA
Accredited Laboratory



MINERVA LABS

Why Minerva Labs?

- ✓ **CLIA and COLA-accredited** laboratory.
- ✓ **Unmatched accuracy** and rapid results.
- ✓ **Comprehensive reports** tailored to clinicians' needs.

Contact Information:

Minerva Labs

Address : 1203 S White Chapel Blvd Ste 150
Southlake, Texas 76092

Phone : +1 965-279-2091

Email : info@minervalabs.health