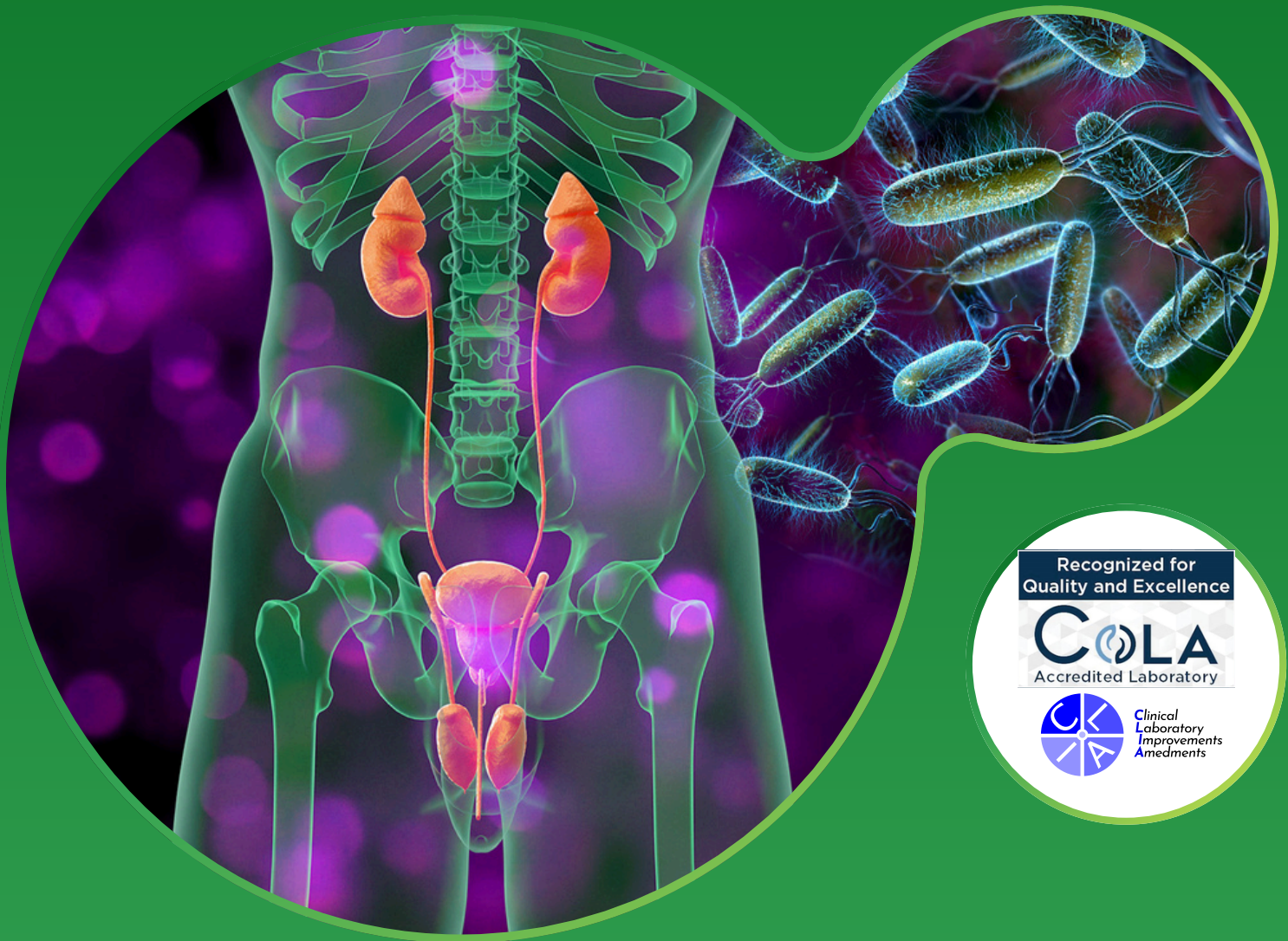




MINERVA LABS

Urinary Tract Infection (UTI) Panel

Empowering Precision Healthcare with Advanced UTI Diagnostics



Recognized for
Quality and Excellence

COLA
Accredited Laboratory



Clinical
Laboratory
Improvements
Amendments

Minerva Labs

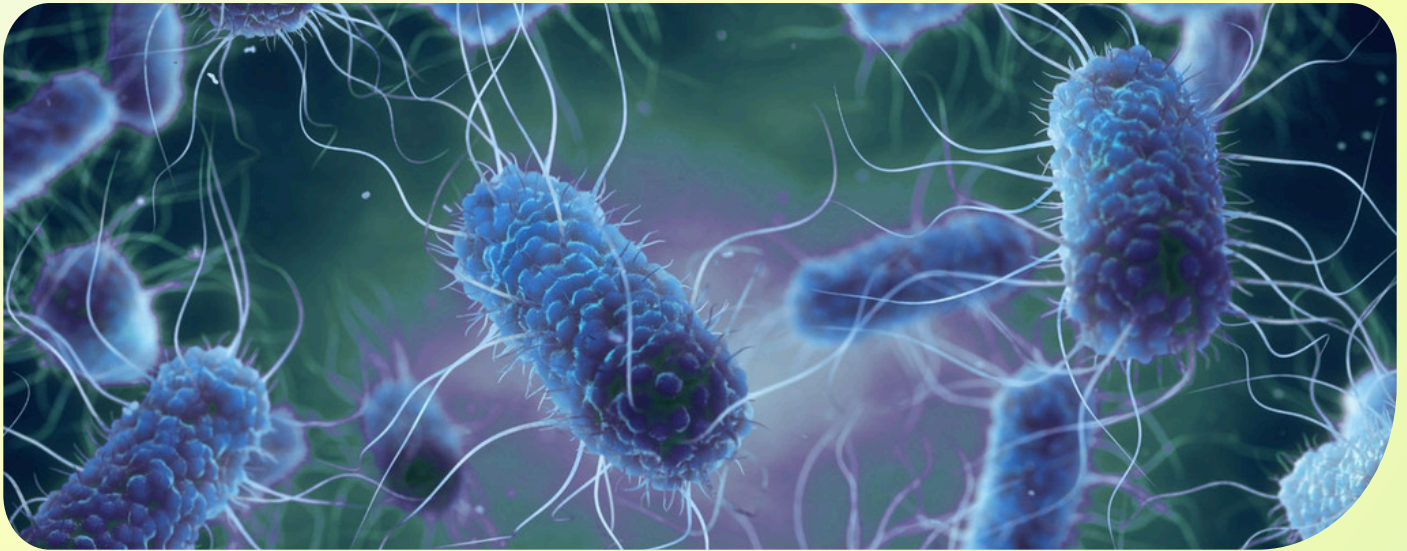
Address: 1203 S White Chapel Blvd Ste 150 Southlake, Texas 76092

Phone: +1 965-279-2091 • **Email:** info@minervalabs.health

CLIA ID: 45D2314244 • **Lab Director:** Dr. Shaiju Vareed, PhD

Introduction to UTI

(Urinary Tract Infection)

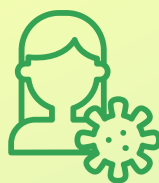


Urinary Tract Infections (UTIs) are one of the most common bacterial infections globally, significantly affecting women's health. While **Escherichia coli** accounts for most cases, other bacteria and fungi also play critical roles, especially in complicated infections.

Key Facts:



UTIs affect approximately **150 million people** worldwide each year.



Over **50% of women** experience at least one UTI in their lifetime.



UTIs lead to over **10 million doctor visits** annually in the U.S.

Characteristics and Diagnosis

Characteristics of UTIs

Symptoms include:



Painful or burning urination (dysuria)



Frequent urination with small output.



Lower abdominal pain or pressure.



Cloudy, foul-smelling, or bloody urine.



Fever and chills, indicative of kidney involvement.

Diagnosis of UTIs:

Traditional Diagnostic

Detects pathogens but requires 48–72 hours.

PCR-Based Diagnostics (Offered by Minerva Labs)

- **Detects bacterial and fungal pathogens** with superior speed and accuracy.
- **Identifies antibiotic resistance** markers for personalized treatment.

Associated Diseases

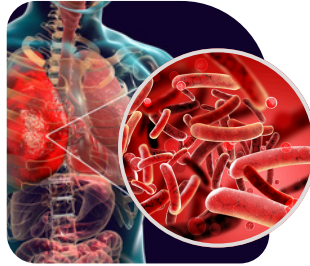
UTIs can lead to severe health complications if untreated, including:

Bacterial Infections:



Escherichia coli:

Causes 90% of uncomplicated UTIs.



Klebsiella pneumoniae:

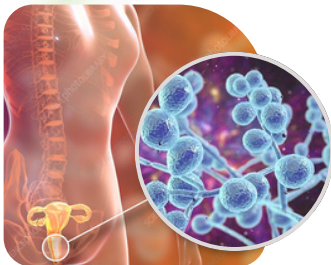
Associated with hospital-acquired infections.



Proteus mirabilis:

Known for causing kidney stones.

Fungal Infections:



Candida albicans:

Common in immunocompromised individuals or catheter users.

Interesting Facts



UTIs are the **second most common** type of infection worldwide.



Recurrence occurs in up to **30% of cases** within six months.



Women are **30 times** more likely to develop UTIs than men.

UTI Testing at Minerva Labs



Pathogens Detected

Bacteria:



Escherichia coli



Klebsiella pneumoniae

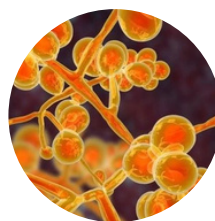


Proteus mirabilis

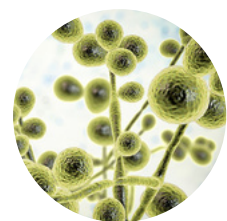
Fungi:



Candida albicans



Candida auris



Candida glabrata

Resistance Genes Detected

- Methicillin/Oxacillin (MRSA)
- Beta-Lactamases (ESBLs, KPC, NDM)
- Fluoroquinolone and Trimethoprim resistance

Measures After Positive Reports

Steps to Take:



Step 1

Start appropriate antibiotic therapy based on **susceptibility results**.



Step 2

Educate patients about hydration and hygiene practices.



Step 3

Schedule follow-ups to **monitor recovery** and prevent recurrence.



Why Choose Minerva Labs for UTI Diagnostics?



Rapid Results:

Delivered within **24–48 hours** after we receive your sample.



Resistance Marker

Detection: Guides clinicians in effective antibiotic selection.



Comprehensive Pathogen Coverage:

Includes bacterial and fungal pathogens.



Accreditation:

COLA-certified and CLIA-accredited for the highest quality standards.

Antibiotic Stewardship Program



Minerva Labs' Commitment to Responsible Antibiotic Use:

We help clinicians make informed treatment decisions, reducing the risk of antibiotic resistance and improving patient outcomes.

Program Highlights



Detection of resistance genes to guide precise antibiotic use.



Evidence-based recommendations for personalized treatment.



Collaboration with healthcare providers for optimal care delivery.

Benefits



Reduces recurrence and resistance.



Supports efficient and effective treatments.



Recognized for
Quality and Excellence

COLA

Accredited Laboratory



Clinical
Laboratory
Improvements
Amenments



MINERVA LABS

Why Minerva Labs?

- ✓ **CLIA** and **COLA-accredited** laboratory.
- ✓ **Unmatched accuracy** and rapid results.
- ✓ **Comprehensive reports** tailored to clinicians' needs.

Contact Information:

Minerva Labs

Address : 1203 S White Chapel Blvd Ste 150
Southlake, Texas 76092

Phone : +1 965-279-2091

Email : info@minervalabs.health