



**MINERVA LABS**

# Wound Pathogen Panel

Precision Diagnostics for Effective Wound Care Management



Recognized for  
Quality and Excellence

**COLA**  
Accredited Laboratory



Clinical  
Laboratory  
Improvements  
Amendments

**Minerva Labs**

**Address:** 1203 S White Chapel Blvd Ste 150 Southlake, Texas 76092

**Phone:** +1 965-279-2091 • **Email:** [info@minervalabs.health](mailto:info@minervalabs.health)

**CLIA ID:** 45D2314244 • **Lab Director:** Dr. Shaiju Vareed, PhD

# Introduction to Wound Care Testing



Wounds are more than physical injuries; they are ecosystems where microorganisms thrive. Accurate diagnosis of wound infections is crucial to guiding treatment and ensuring effective healing.

## Key Facts:



Chronic wounds often harbor multiple pathogens that delay healing.



Accurate detection helps guide targeted therapies, minimizing complications and antibiotic misuse.

## Minerva Labs' Wound Pathogen Panel:



Using **advanced PCR technology**, we illuminate the unseen pathogens in wounds, paving the way for targeted and precise care.

# Testing Procedure

## How Minerva Labs' Wound Pathogen Panel Works:



### Sample Collection:

A swab is taken from the wound, capturing its microbial diversity.



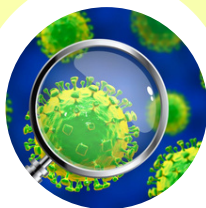
### DNA Extraction:

Genetic material is isolated from the sample.



### PCR Amplification:

Specific DNA sequences of common wound pathogens are amplified.



### Detection & Identify:

Pathogens are identified through molecular analysis.



### Antibiotic Stewardship:

Antibiotic markers guide treatment decisions, ensuring effective care.

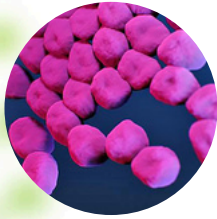






# Pathogens and Resistance Markers

## Bacteria and Protozoan Pathogens:



**Acinetobacter  
baumannii**



**Escherichia  
coli**

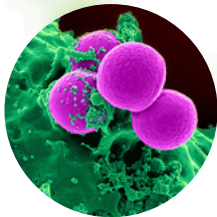


**Klebsiella  
pneumoniae**

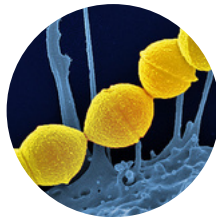


**Pseudomonas  
aeruginosa**

## Fungi Pathogens:



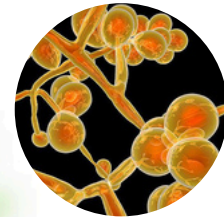
**Staphylococcus  
aureus**



**Streptococcus  
pyogenes**



**Candida  
albicans**



**Candida auris**



## Antibiotic Resistance Genes Identified:

- Methicillin/Oxacillin resistance (MRSA)
- Beta-Lactamases (KPC, CTX-M1)
- Fluoroquinolone resistance (MUT and WT)
- Vancomycin resistance

# Benefits of Minerva Labs' Wound Care Testing



## Why Choose Minerva Labs for RPP Diagnostics?



**Rapid Turnaround:**  
Results delivered within  
**24–48 hours** after we  
receive your sample.



**Precision Care:** Helps  
clinicians reduce trial-  
and-error approaches.



**Comprehensive  
Detection:** Identifies  
bacterial and fungal  
pathogens.



**Actionable Insights:**  
Includes resistance  
profiles and treatment  
guidance.



# Specimen Collection and Transport

## Sample Collection Guidelines:



### Step 1

Wash hands and wear **sterile gloves**.



### Step 2

Clean the wound periphery with **antiseptic solution**.



### Step 3

Swab the most active or purulent part of the wound, **gently rotate the swab** to collect cells.



## Specimen Transport:



### Step 1

Place the swab in a transport medium immediately.



### Step 2

Label the container with the patient's **name**, **DOB**, and collection **date**.



### Step 3

Store at **2–8°C** if there's a delay in transport.



# Antibiotic Stewardship Program



## Minerva Labs' Commitment to Responsible Antibiotic Use:



Provides evidence-based recommendations to clinicians.



Reduces antibiotic misuse and resistance risks.



Improves patient outcomes through tailored therapies.

## Program Key Features



**Detects resistance** markers to guide optimal therapy.



Reduces **unnecessary antibiotic** use.



**Supports clinicians** with precise, actionable insights.





Recognized for  
Quality and Excellence

**COLA**  
Accredited Laboratory



Clinical  
Laboratory  
Improvements  
Amendments



**MINERVA LABS**

## Why Minerva Labs?

- ✓ **COLA** and **CLIA-accredited** laboratory
- ✓ **Unmatched accuracy** and rapid results.
- ✓ **Comprehensive reports** tailored to clinicians' needs.

## Contact Information:

### Minerva Labs

**Address** : 1203 S White Chapel Blvd Ste 150  
Southlake, Texas 76092

**Phone** : +1 965-279-2091

**Email** : [info@minervalabs.health](mailto:info@minervalabs.health)